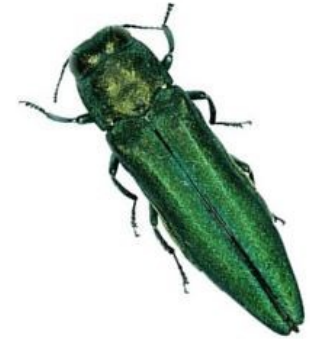




EMERALD ASH BORER COMMUNITY MANAGEMENT MEETING

EMERALD ASH BORER (EAB) is a non-native invasive forest pest threat and it's heading towards YOUR community. Learn what you can do to protect, treat, and manage ash trees in your community.

Please join our community meeting in your area to learn more about the threat and impacts of EAB and how to design an effective management plan to help protect your ash trees. Urban and rural foresters, arborists, landowners, and community decision makers are invited to attend.



Locations:

- **February 21st:** Carbondale Civic Center, 200 South Illinois Avenue, **Carbondale**
- **February 22nd:** Metro East Parks and Recreation District, 104 United Drive, **Collinsville**
- **February 23rd:** Ballard Nature Center, 5253 US 40, **Altamont**
- **February 28th:** University Farm-Livestock Center, County Road 1100E, **Macomb**



City of Macomb

Meeting schedule: 9:00 a.m. to 2:00 p.m., lunch and refreshments included.

\$10 registration, CEUs are available

Register [HERE](#): or call The Morton Arboretum at 630-719-2468.

